

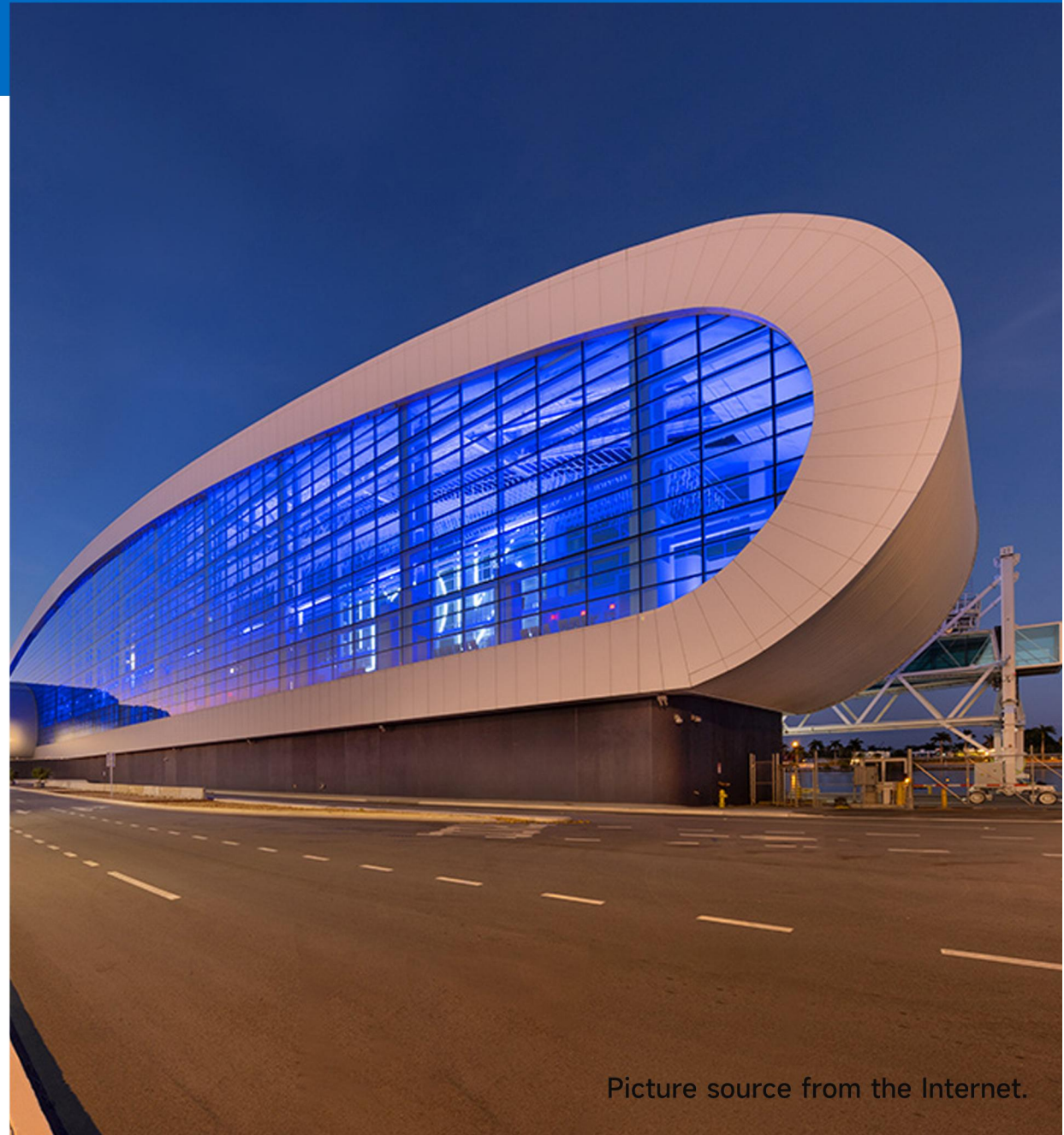
NCL Terminal B – Port Miami

Climate and environment:

High-risk hurricane area, Atlantic hurricane season from June to November each year.

Why Choose Colored Aluminum as the Building Material?

- The panel system is lightweight and flexible to process, making it suitable for use as a shell in environments with high wind pressure and high load requirements.
- Resistant to salt spray, wind pressure, strong UV rays, and hurricane loads



Italian Alps Skyway Mont Blanc

Climate and environment:

Typical alpine climate: low temperature, thin air, strong ultraviolet rays, wind, snow, freezing, large temperature difference between day and night, and harsh construction and maintenance conditions.

Why Choose Colored Aluminum as the Building Material?

- The alloy material is light, high-strength, corrosion resistant, and can be quickly processed and formed. It is suitable for high-altitude environments such as extremely low temperatures, strong winds and snow, frost/icing cycles, strong ultraviolet radiation, and difficult transportation and construction.
- Foldable aluminum allows for curved/sloped shapes in situations where terrain changes and structures are complex and overhanging, while also reducing weight and simplifying transportation and installation.



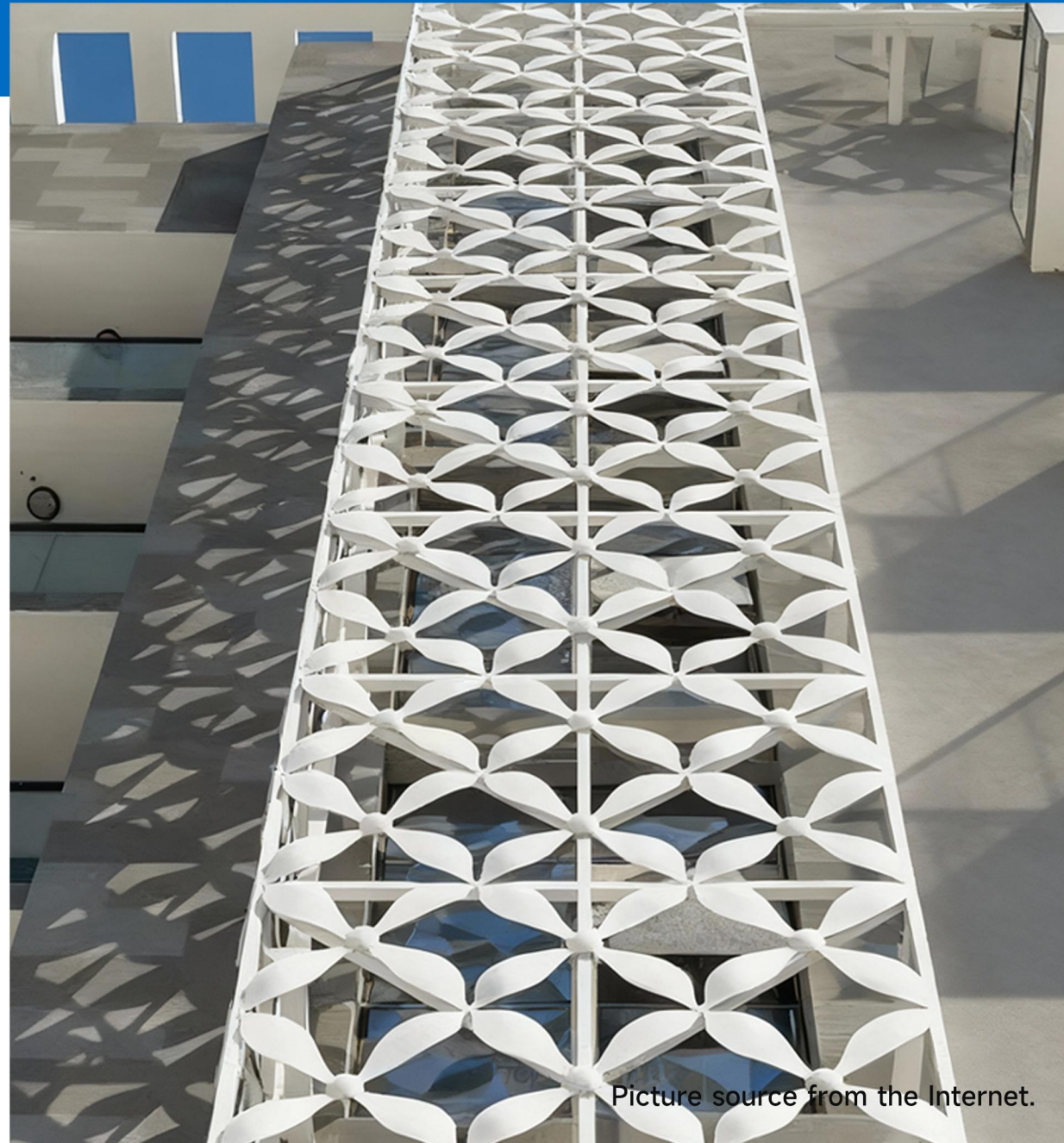
Yemen "3D Sculpted Aluminum Curtain Wall" Building

Climate and environment:

Summer temperatures can exceed 45°C, accompanied by harsh environments such as sand, dust, salt fog, and strong ultraviolet rays.

Why Choose Colored Aluminum as the Building Material?

- Aluminum has excellent weather resistance: high temperature resistance, UV resistance, salt spray resistance, and wind and sand resistance.
- Aluminum curtain walls combined with back ventilation system or cavity structures can reduce the direct heat transfer into the building, thereby reducing the air conditioning load/heat load.
- The material is relatively lightweight and can be processed into complex shapes, making it suitable for building facade design.



Picture source from the Internet.

"Dubai Landmark" aluminum curtain wall project

Climate and environment:

Typical desert climate with extremely high temperatures, where summer temperatures often reach 50°C.

Why Choose Colored Aluminum as the Building Material?

- In extremely high temperature environments, ordinary curtain wall materials may warp, deform, fade, and their connectors may fail. Aluminum composite panels are more stable in such environments.
- Aluminum materials have good reflectivity and high weather resistance, and can be coated to reduce solar radiation and heat gain inside the building.
- The advantages of fast installation, low maintenance and lightweight are particularly important for large-scale high-rise buildings.



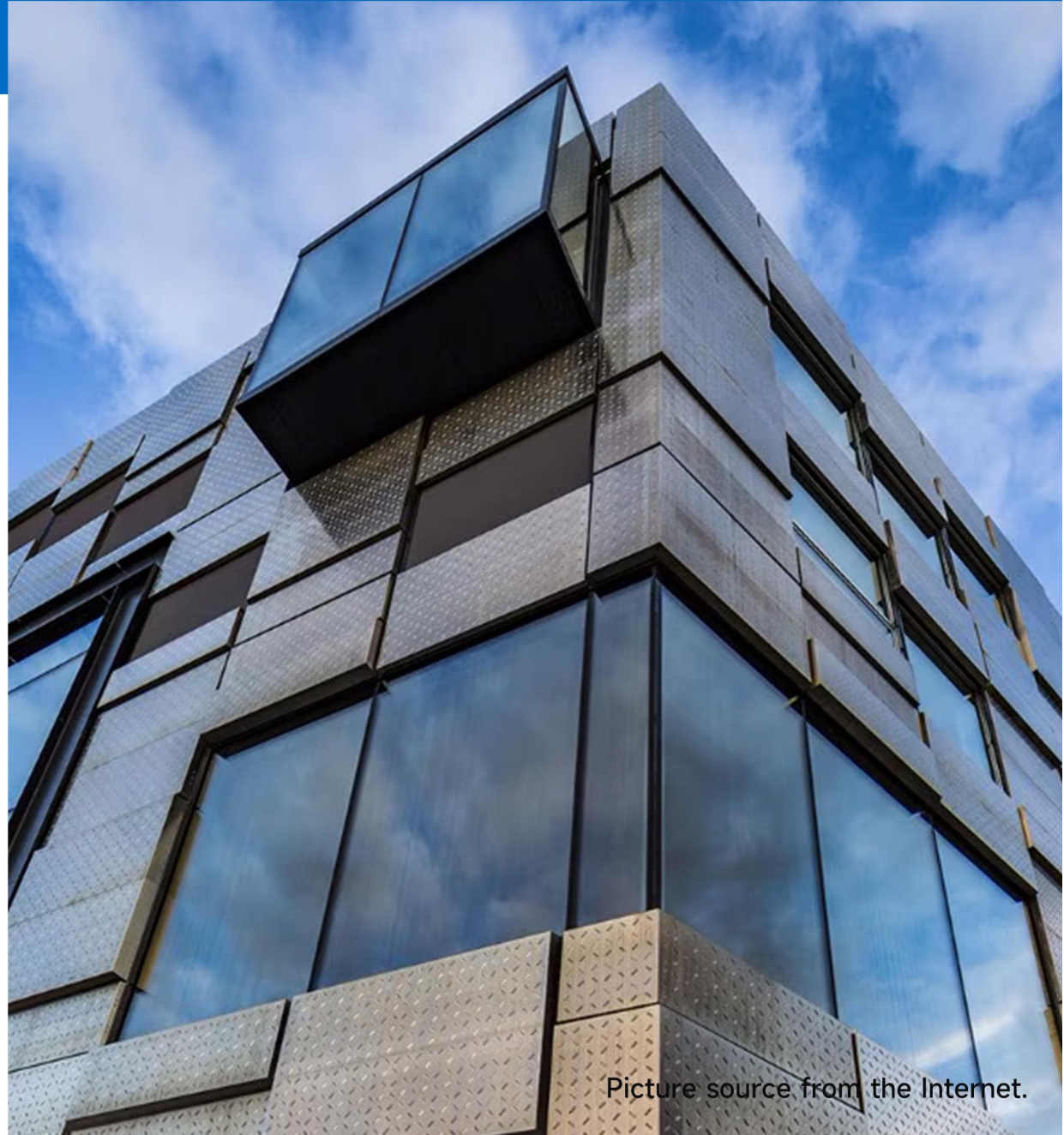
Faculty of Fine Art, Music and Design(Bergen)

Climate and environment:

It is a rainy, windy, seawater fog, and salt mist environment. There is little sunshine in winter and the temperature difference is large.

Why Choose Colored Aluminum as the Building Material?

- Designed to withstand rainy, windy conditions with seawater fog and salt mist, while enduring large temperature variations throughout the year.
- Provides strong durability and low maintenance costs.
- The advantages of fast installation, low maintenance and lightweight are particularly important in large-scale high-rise buildings.



Picture source from the Internet.